

# KIDS CAN'T WAIT



THANK  
YOU

WITHOUT YOUR DONATIONS, WE WOULD HAVE  
GONE WITHOUT



corporate

\$37,176



events

\$17,493



appeals

\$136,830



bequests

\$36,713



grants /  
foundations

\$110,000

## Your donations have allowed StGiles to:

- Purchase personal protective equipment for staff and participants
- Purchase speech pathology equipment
- Provide tertiary scholarships to 8 staff
- Deliver performing arts programs to 20 young people
- Update our server, tech software and hardware, including zoom licenses to adjust to COVID-19 remote provision of our services – including tele-health capacity
- Purchase bedwetting alarms and continence equipment



## 1951: "Worse than 1938"

**Launcestonian, and Tasmanian Health Minister during the period Dr "Spot" Turnbull said the 1951 polio outbreak was worse than 1938 because of the "lack of cooperation by the public".**

"With the Christmas holidays, everyone went away and forgot about polio ... a number of organisations running regattas and sports meetings had been displeased because the Health Department had banned children. It is absurd that the department be picked on by associations because of their financial loss," he said.

In January 1952, the second wave and closure of theatres, pools and sporting events brought protest.

"The polio committee closed theatres and banned large gatherings of children. These actions brought such an outcry that this year no doubt the committee left such decisions to the discretion of parents".

Christmas 2020 and we've adapted to closed borders, social distancing, no mass gatherings, the importance of wearing a mask,

lockdown, curfews and, everywhere, hand sanitiser. Who'd have thought? Strange how quickly we forgot those times – recorded by historian Anne Green in *Billycarts and Wheelchairs – 75 Years of StGiles*.

"At the end of September, The Examiner announced "Three cases of polio – one fatal – have been reported in Tasmania during the last few days".

"By early November there were 18 reported cases in the state, with the larger portion in Hobart and only one in Launceston. Gradually the cases spread throughout the state. As if resigned to its arrival, there were no discussions as to quarantining mainlanders, isolating towns in Tasmania or even finger pointing at an area. Instead, simple precautions were urged; for children to avoid strenuous exercise, thus a number of school sports were cancelled, for groups of children not to congregate and a general warning as to good hygiene practices. Fifty cases were diagnosed by the end of November, 79 by Christmas and by the end of January, 139."

## Calling Out Mask Makers for StGiles

### 1000 Masks by Easter

When we heard about the Tassie Face Mask Project, StGiles wanted to help.

We knew that as an essential service, masks were part of our personal protection equipment and we needed a reliable source. In August we held a workshop at Amy Road where staff and volunteers had lessons in mask making from the Project's gurus Bronwin, Jenny and Amanda.

We purchased material, elastic and the Mask Project team gave us patterns and we are building a volunteer base of mask makers for StGiles.

In return we provided in-kind marketing support for the Mask Project and provided them with a stall at our first COVID-safe Niche Market where they raised \$1000.



Can you sew or do you know someone who'd like to help StGiles build its stockpile of face masks?

We can provide kits containing everything you need PLUS you can keep some masks for your immediate family.

In return you are helping us and the people we support stay safe during COVID-19 Contact JasmineJohns@stgiles.org.au

## News

**COVID-Safe Niche, August 29,** was surprisingly successful and will return to the Albert Hall, Launceston for November 7 & 28 and a one-day event at the Burnie Arts and Function Centre on December 5.

August Niche was our first event for this year. StGiles felt the time was right when Tasmania's borders were closed.

We chose a smaller number of makers and put in place StGiles COVID Safety Management Plan.

Volunteers wore distinctive Niche aprons and patrons were respectful.

Niche manager, Victoria Bayes, said she was buoyed by stall-holders willingness to adapt to a cashless model and was pleasantly surprised by visitor numbers.

"By the time we closed at 3pm, 2300 people had safely entered and exited Niche," she said.



### Staff Scholarships

In August the Launceston Friendly Society Pharmacy funded tertiary scholarships for eight StGiles Launceston staff across allied health, disability and nursing. Thank you Max Turner, Peter Hawarth and Janet Hoare and the Board of Launceston Friendly Society Pharmacy.



### NEWS:

StGiles events are a big part of our fundraising budget and we have considered what is possible within COVID-19. Tentatively, we have three Niche markets planned for 2021; if we can provide patron and stallholder safety.

## You carried us through 2020

### Andrew Billing - Chief Executive

This year, a year we might prefer to forget, has for StGiles become a year to remember. Specifically, we will remember, and be grateful for, the resilience of our people and the generosity of our community. As we prepare to leave 2020 behind, I want to make clear how very much more difficult this year could have been, without you. It's been a year where every day has presented a new challenge – often, multiple challenges.

Those of you who have donated or will donate to StGiles this year have supported services, equipment and programs during COVID-19. As 2020 draws to a close, I believe it is very important to say thank you (often) and show you where your money has been spent. So, thank you for:

- Expanding our reach by assisting our teams to provide tele-health and remote services;
- Enhancing our services by funding speech pathology equipment and access to easy English training;
- Supporting our safety by helping us access personal protection equipment for our participants and staff safe;
- Improving our environment by supporting the development of a sustainable garden, the repair of a collapsed retaining wall and other site improvements;

- Ensuring the continuity of our arts programs to Launceston adults and children living with disability;
- Purchasing bedwetting alarms and continence equipment for our Clinical Care team; and,
- Extending the qualifications of eight staff through scholarships.

StGiles teams have worked longer and harder to get StGiles and the people we support through this COVID-19 year. As such we have developed a sturdy COVID plan that will stay in place for the foreseeable future.

At this stage we expect that 2021 will present similar fundraising challenges especially in public events, so we remain grateful for all of the support you provide.

On behalf of the Board and our team I thank you again for your generosity to StGiles this year.



## News

### Balfour Burn 2020

Before the Borders Open Balfour Burn gave us a chance to come together in a relaxed and healthy environment on Sunday, October 18.

We were so grateful to Launceston's own Jake Birthwhistle for setting the pace at just 1min12sec up Launceston's steepest hill to promote the event which exceeded our expectations with some 400 people having a go.

We will bring the Burn back, post COVID, as a Friday twilight fun run.

We couldn't have done it without - David Routley and the team at Routley's Menswear, Calvary Health Care, ALA & Associates, the City of Launceston, Eden Foods, the Launceston Running Club, Rapid Relief, our committee and our crew of 50 volunteers. Thank you!



### Talking Walls Oral History Project

We will be bringing StGiles 2020 oral history project to life with a ticketed black tie cocktail event in Spring 2021 called Talking Walls.

Talking Walls will see interviews conducted during 2020 by Art Historian Bridget Arkless alongside images by award-winning photographer Scott Gelston.

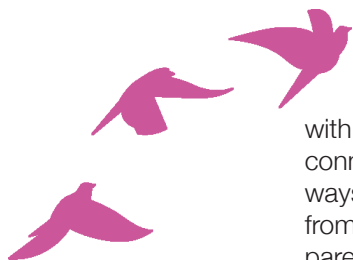
### A Real Difference

Jessica Bryant and the team at Harrison Humphreys donated their commissions for this year to support StGiles Studio Space Program. Studio Space is our All Abilities Theatre Company which gives opportunities to young people and is funded entirely by donation.



### Jane Mignot – We Can Participant

Hello and welcome to my readers. I hope you are all staying well. Things are starting to get back to normal after an anxious and frustrating time and uncertainties of the future. COVID-19 was a learning curve. We all had to adapt to a new life with isolation and restrictions staying at home. I am fortunate to live in a house with a backyard in the city, not in a remote area. My home is within walking distance of services. A lot of people live in apartment blocks



### Jane says:

with only balconies for fresh air. We are all connecting with family and friends in other ways; schooling from home and working from home. The children, elderly people, parents who lost their employment – 2020 was a time of hardship and fear of living in lockdown. My own experience of COVID-19 was that I have recently moved to Devonport and am enjoying my social groups in the community. I have a NDIS action plan. But all my training and support services went on hold because of COVID. I have low vision. My supports are back on track. I decided not to use public transport to visit family and friends. We all had new safe methods of keeping in touch with others living in an anxious times, with uncertainty and isolation.